

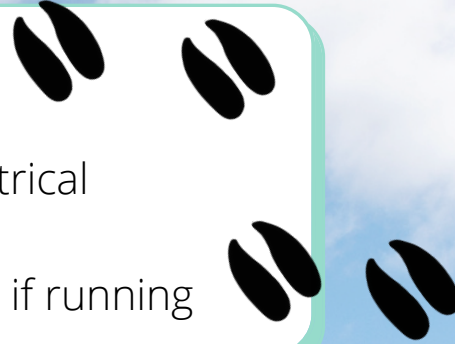
# Red Deer Signs



(C) Susanna Ramsey

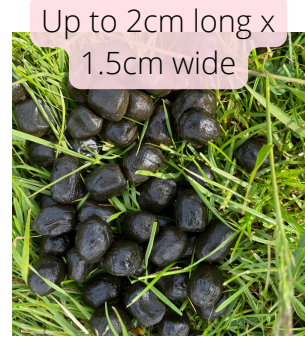
## Track

- Two hooves on each foot
- Long and narrow. Symmetrical
- 7.8cm x 6cm
- Splayed outwards, if running



## Poo

- Black, drying to brown
- Sticky 'currants'
- No smell
- Dropped in piles or strings, at random
- Males leave 'pats' 5-7cm diameter, in summer



(C) Susanna Ramsey



(C) Canva

## Antlers

- Male deer have antlers
- Antlers fall off in February-March
- New ones quickly grow back

## Field Signs on Trees

- Deer graze on branches and leaves up to 2.4m, leaving a 'browse line'
- Deer strip bark up to 2m
- They rub and scratch bark with their antlers

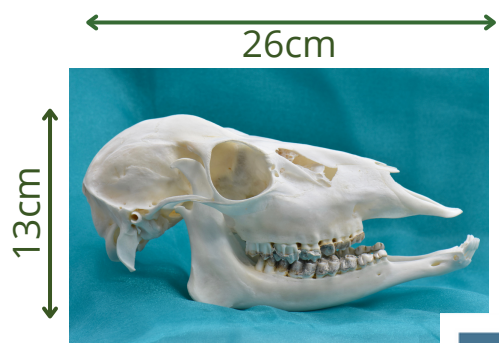


(C) Susanna Ramsey

## Hair & Skull

- Hair is thick & spongy
- Red/brown or grey
- Huge eye sockets, high on head
- No top incisors
- Long gap, then molars
- Long snout

## Fallow Deer Skull



(C) Susanna Ramsey